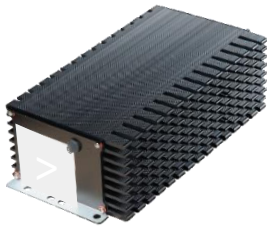




ELIPS 720 & 1500 for Industrial Vehicles*

Overview

- > On-board chargers with nominal power of 720 W or 1,500 W
- > Sealed design for high durability (water, dust, acid vapors)
- > Robust case against mechanical shocks and vibrations
- > Universal AC supply (85 to 265VAC)
- > Heat dissipation without internal fan
- > CANBUS link for communication (optional)
- > Thermal, short circuit, reverse polarity protections
- > Compatible with all battery types ((Lead, Lithium...))



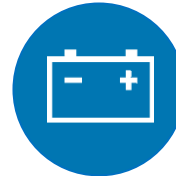
Sealed
design



Vibration
proof



Universal
AC input



All
battery Types

Main applications

- > Forklifts
- > Aerial Platforms
- > Utility Vehicles
- > Recreational Vehicles

Main features

With a compact design thanks to their high frequency electronics, the ELIPS720 & ELIPS1500 chargers are perfect for integration into industrial or leisure electric vehicles. Resisting high shock and vibrations, with a sealed enclosure, they have been designed to withstand harshest environment.

INPUT

Voltage: Universal 85 – 265V AC Single Phase

Mains Frequency 45 to 65 Hz

Power factor : > 0,99

Efficiency > 90%

OUTPUT

Voltage: 24V (ELIPS 720), 48V or 72V (ELIPS 1500)

Power: ELIPS720: 720W @230V, ELIPS1500: 1,500W @230V

Maximum current: 30 Amps

COMMUNICATION BUS

By serial port

ELECTRONIC PROTECTION

Overload and output short-circuit

Over temperature and temperature regulation

Output over voltage / reverse polarity

OPERATING TEMPERATURE

Temperature: -25°C to +40°C (50°C for ELIPS1500)

Relative Humidity: 10% to 100%

MECHANICAL FEATURES

Dimensions ELIPS720: H 74mm x L 253mm x W 126mm

Dimensions ELIPS1500: H 145mm x L 260mm x W 210mm

Index Protection: IP66 (ELIPS720) / IP65 (ELIPS1500)

Weight: 3 kg (ELIPS720) / 5 kg (ELIPS1500)

Programming

Selection & Indicators:

- Charging curve: 4 positions
- Light status indicators (by wire)

Standard compliance

- Safety: EN62368-1 / UL1564 (ELIPS720)
- EMC: EN 61000-6-2 / 6-4 / 3-2 / 3-3
- California Standards (ELIPS720)



ELIPS720
ELIPS1500



ELIPS720



ELIPS720



Forklifts



Aerial Platforms



Utility Vehicles



Recreational Vehicles

*This product is specifically designed, and is to be installed, as part of this type of equipment:

- Means of transport for persons or goods, excluding electric two-wheel vehicles which are not type-approved
- Non-road mobile machinery made available exclusively for professional use

This product fulfil its function only if it is part of this kind of equipment, and can be replaced only by the same specifically designed product.